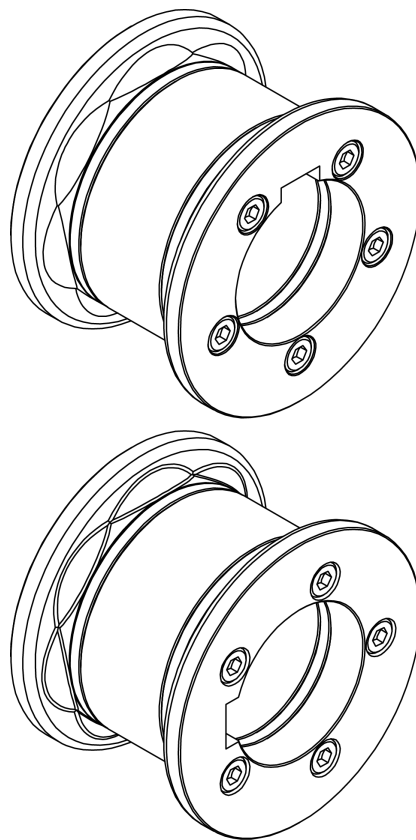


Set of tube engraving rollers for 50mm and 60mm diameter tubes.

Ref. 140-11-01-00503

NOA60



TECHNICAL SPECIFICATIONS

PRADA NARGESA, S.L
Ctra. de Garrigàs a Sant Miquel s/n
17476 Palau de Santa Eulàlia (GIRONA) SPAIN Tel.
972 568085 - nargesa@nargesa.com
www.nargesa.com

INDEX

1. Tool description

2. Element identification

2.1. Upper roller

2.2. Lower roller

3. Roller assembly

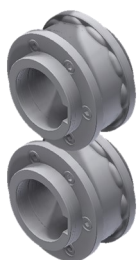
3.1. Assembly of rollers for 50 mm tube

3.2. Assembly of rollers for 60 mm tube

4. Our range of tube engraving rollers

1. Tool description

► Set of tube engraving rollers for 50mm and 60mm tubes



Reference: 140-11-01-00503

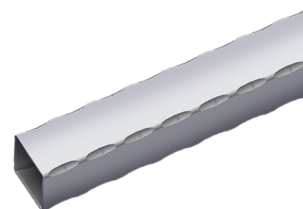
Set of segmented rollers for engraving different sizes of square or rectangular tubes in a single set. Adaptable to the following tubes:

Square tube: 50mm or 60mm

Rectangular tube: 50x20mm, 50x25mm, 50x30mm, 50x35mm, 50x40mm, 50x45mm, 60x20mm, 60x25mm, 60x30mm, 60x35mm, 60x40mm, 60x45mm, 60x50mm or 60x55mm

For its use, guide 140-11-01-00505 or guide 140-11-01-00506 is required.

For different sizes, please consult the manufacturer.



Machine-specific set	Minimum recommended material thickness by the manufacturer.	Weight
1	3 mm	6 Kg

► 50mm tube entry guide



Reference: 140-11-01-00505

50mm tube entry guide

Weight: 2.4 Kg

► 60mm tube entry guide



Reference: 140-11-01-00506

60mm tube entry guide

Weight: 2.2 Kg

2. Element identification

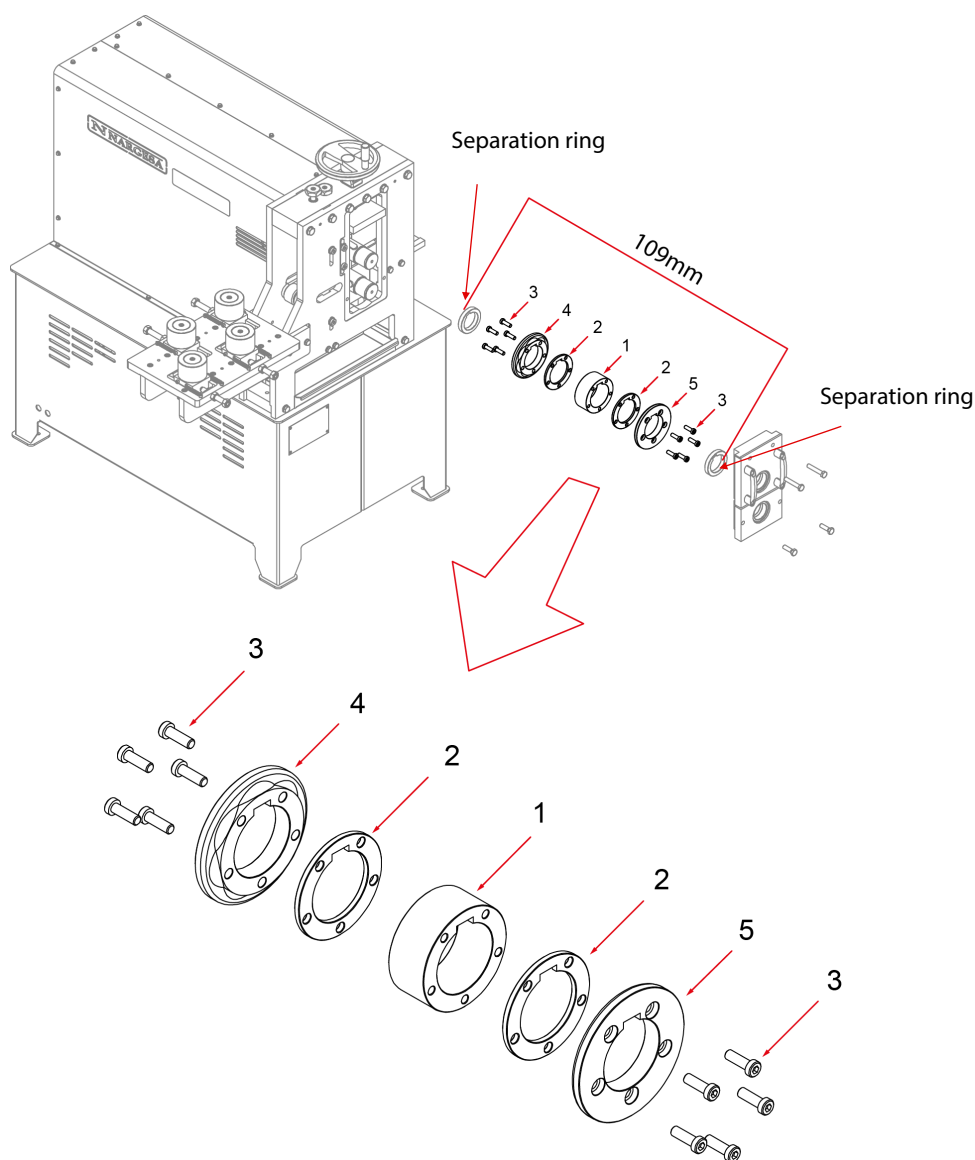
The segmented rollers for tube engraving have been designed to work with different tube sizes using a single set of rollers.

2.1. Upper roller

IMPORTANT: For proper use of the machine, it is essential to place two spacer rings, one at each end of the engraving roller, so that the total length of the assembly is always 109mm.



DANGER: Never exceed this maximum length of 109mm.

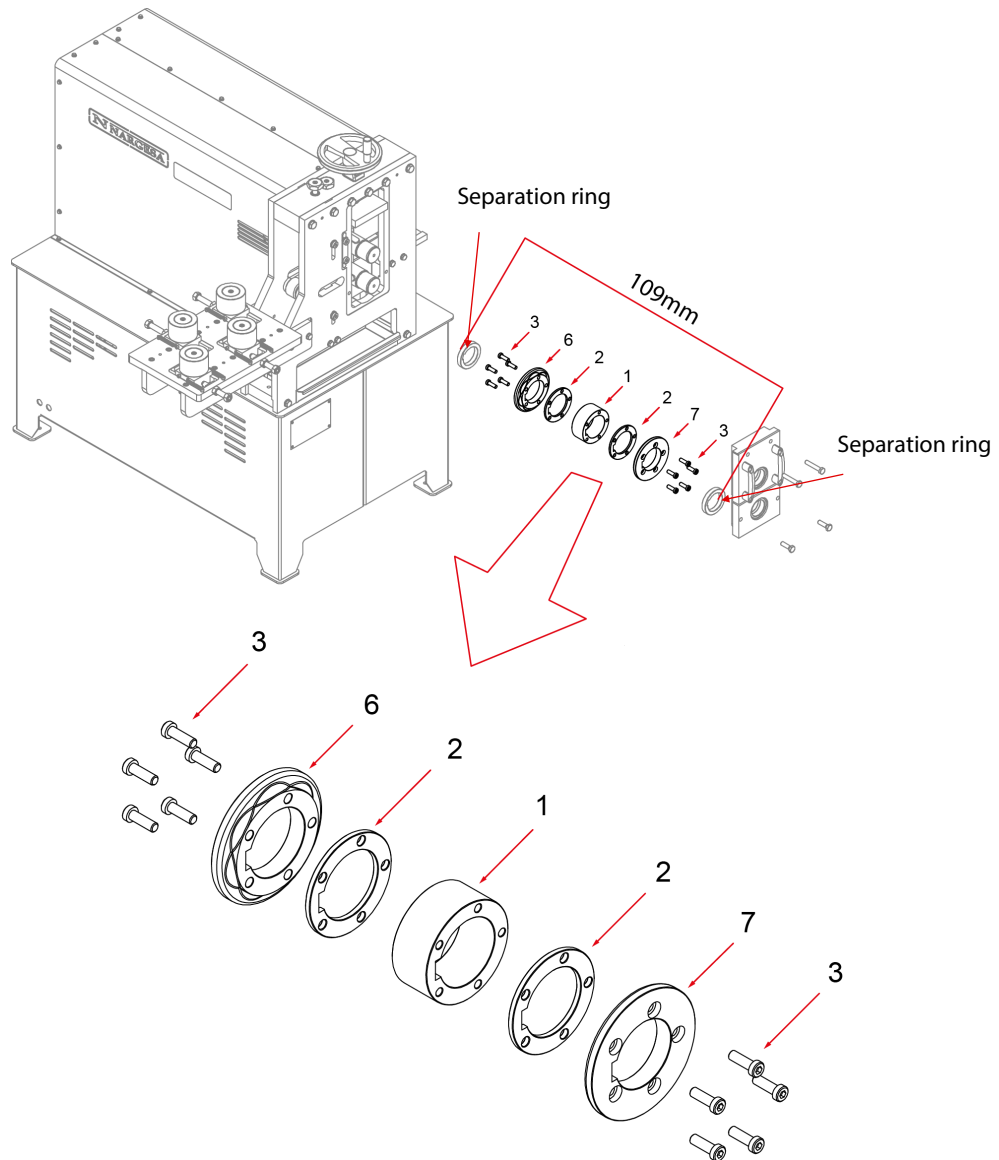


1	125-11-01-00003	38 mm SPACER	1
2	125-11-01-00004	5 mm SPACER	2
3	020-D6912-M8X25	REDUCED HEAD ALLEN SCREW DIN 6912 M8X25	10
4	125-11-01-00001	UPPER INTERIOR SIDE ROLLER TUBE 50-60	1
5	125-11-01-00002	UPPER EXTERIOR SIDE ROLLER TUBE 50-60	1

2.2. Bottom roller

IMPORTANT: For proper use of the machine, it is essential to place the two spacer rings, one at each end of the engraving roller, so that the total length of the assembly is always 109mm.

! DANGER: Never exceed this maximum length of 109mm.

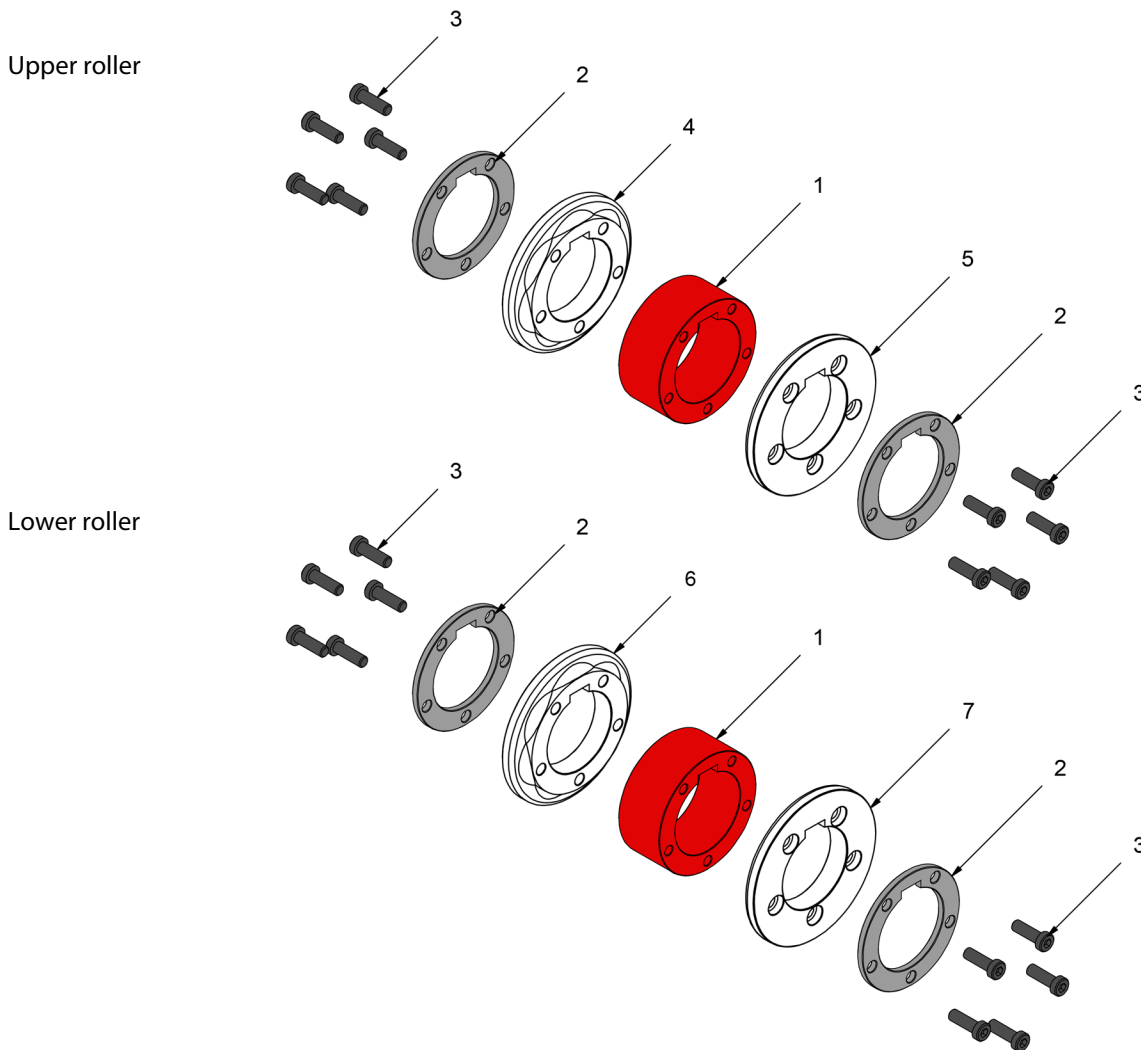


1	125-11-01-00003	38 mm SPACER	1
2	125-11-01-00004	5 mm SPACER	2
3	020-D6912-M8X25	REDUCED HEAD ALLEN SCREW DIN 6912 M8X25	10
6	125-11-01-00018	LOWER INTERIOR SIDE ROLLER TUBE 50-60	1
7	125-11-01-00019	LOWER EXTERIOR SIDE ROLLER TUBE 50-60	1

3.Assembly of the rollers

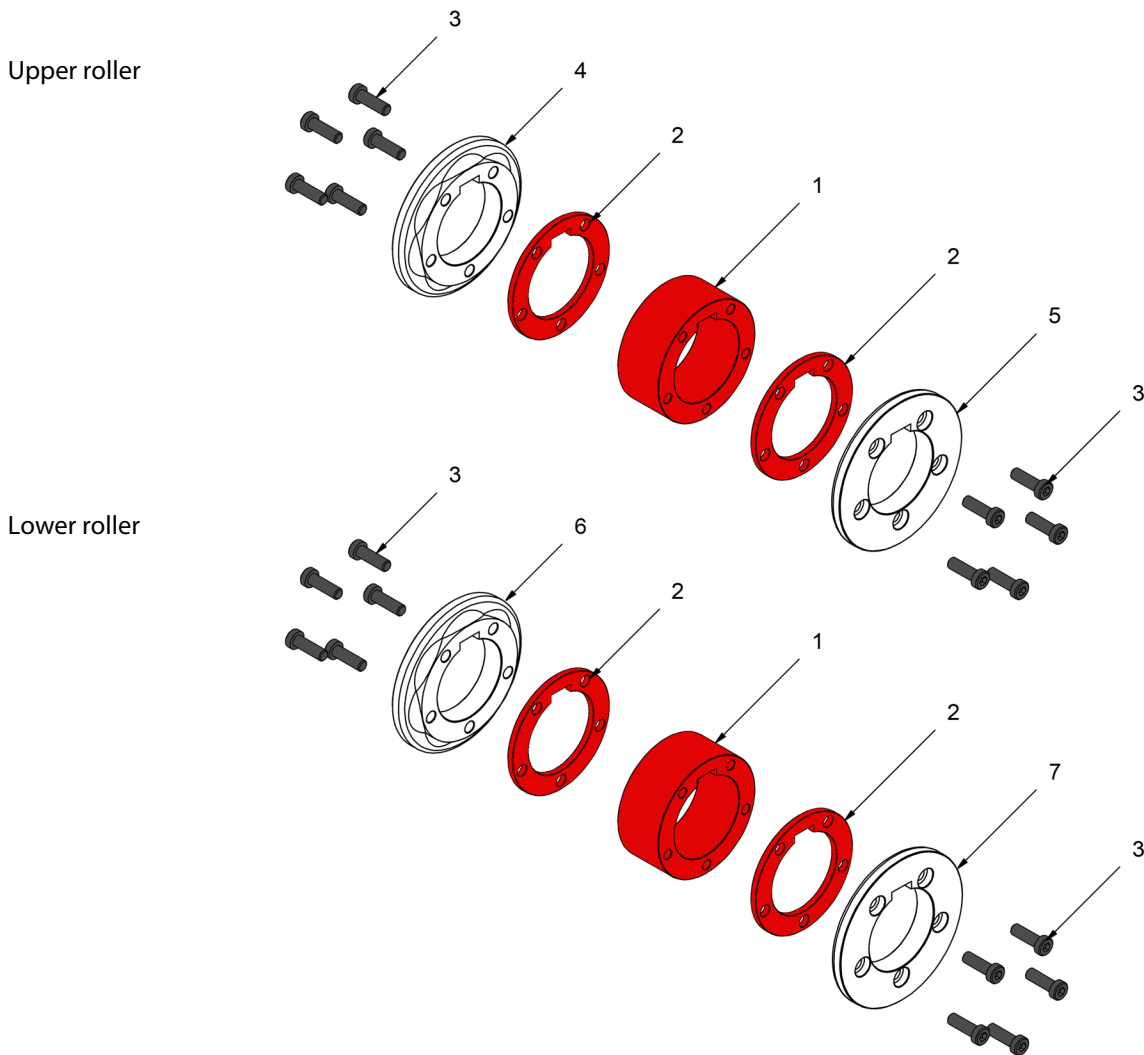
We will use the different sections of the rollers depending on the size of the tube we are going to engrave. Next, we detail the elements used for each tube size, always adding sections 4 and 5 (on the upper roller) or 6 and 7 (on the lower roller), which are responsible for the engraving on the tube.

3.1. Assembly of the rollers for 50mm tube.



	INTERIOR	1	125-11-01-00003	38 mm SPACER
	EXTERIOR	2	125-11-01-00004	5 mm SPACER
	SCREWS	3	020-D6912-M8X25	REDUCED HEAD ALLEN SCREW DIN 6912 M8X25
		4	125-11-01-00001	UPPER INTERIOR SIDE ROLLER FOR 50-60 mm TUBE
		5	125-11-01-00002	UPPER EXTERIOR SIDE ROLLER FOR 50-60 mm TUBE
		6	125-11-01-00018	LOWER INTERIOR SIDE ROLLER FOR 50-60 mm TUBE
		7	125-11-01-00019	LOWER EXTERIOR SIDE ROLLER FOR 50-60 mm TUBE

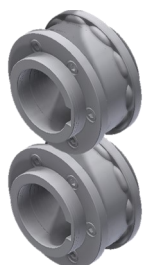
3.2. Assembly of the rollers for 60mm tube



	INTERIOR	1	125-11-01-00003	38 mm SPACER
	EXTERIOR	2	125-11-01-00004	5 mm SPACER
	SCREWS	3	020-D6912-M8X25	REDUCED HEAD ALLEN SCREW DIN 6912 M8X25
		4	125-11-01-00001	UPPER INTERIOR SIDE ROLLER FOR 50-60 mm TUBE
		5	125-11-01-00002	UPPER EXTERIOR SIDE ROLLER FOR 50-60 mm TUBE
		6	125-11-01-00018	LOWER INTERIOR SIDE ROLLER FOR 50-60 mm TUBE
		7	125-11-01-00019	LOWER EXTERIOR SIDE ROLLER FOR 50-60 mm TUBE

4. Our range of tube engraving rollers

▶ **Set of tube engraving rollers for 25mm or 1", 30mm or 1 1/4", 35mm, and 40mm**



Reference: 140-11-01-00500

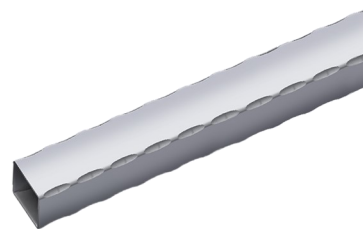
Set of segmented rollers for engraving different sizes of square or rectangular tubes in a single set. Adaptable to the following tubes:

Square tube: 25mm or 1", 30mm or 1 1/4", 35mm, and 40mm.

Rectangular tube: 25x20mm or 1"x3/4", 30x20mm or 1 1/4"x3/4", 30x25mm, 35x20mm, 35x25mm, 40x20mm, 40x25mm, 40x30mm, 40x35mm.

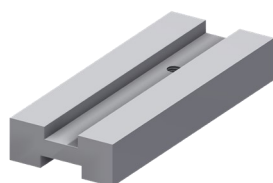
For use, the guide 140-11-01-00501 or the guide 140-11-01-00502 is necessary.

For different sizes, please consult the manufacturer.



Set per machine.	Minimum material thickness recommended by the manufacturer.	Weight
1	3 mm	12 Kg

▶ **Entry guide for 25mm or 1" and 30mm or 1 1/4" tube.**

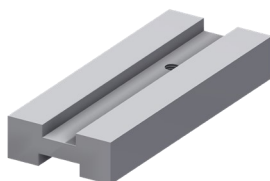


Reference: 140-11-01-00501

Entry guide for 25mm or 1" and 30mm or 1 1/4" tube.

Weight: 3 Kg.

▶ **Entry guide for 35mm and 40mm tube.**

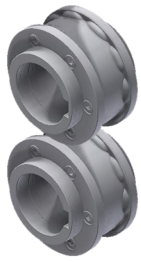


Reference: 140-11-01-00502

Entry guide for 35mm and 40mm tube

Weight: 2.8 Kg

► **Set of rollers for engraving 1 1/2-inch, 2-inch, and 2 1/2-inch tubes.**

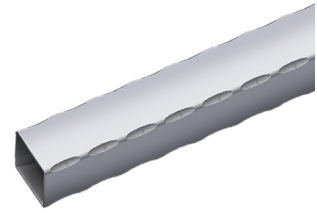


Reference: 140-11-01-00507

Set of segmented rollers for engraving different sizes of square or rectangular tubes in a single set. Adaptable to the following tubes:

Square tube: 1 1/2-inch, 2-inch, and 2 1/2-inch

Rectangular tube: 1 1/2"x3/4", 1 1/2"x1", 2"x1", 2"x1 1/4", 2"x1 1/2", 2 1/2"x1 1/2" inches



For use, guide 140-11-01-00508, 140-11-01-00509, or guide 140-11-01-00510 is required.

For different measurements, please consult the manufacturer.

Set per machine.	Minimum material thickness recommended by the manufacturer.	Weight
1	3 mm	6 Kg

► **Entry guide for 1 1/2-inch tube.**



Reference: 140-11-01-00508

Entry guide for 1 1/2-inch tube

Weight: 2.6 Kg

► **Entry guide for 2-inch tube.**



Reference: 140-11-01-00509

Entry guide for 2-inch tube

Weight: 2.4 Kg

► **Entry guide for 2 1/2-inch tube.**



Reference: 140-11-01-00510

Entry guide for 2 1/2-inch tube

Weight: 2.2 Kg