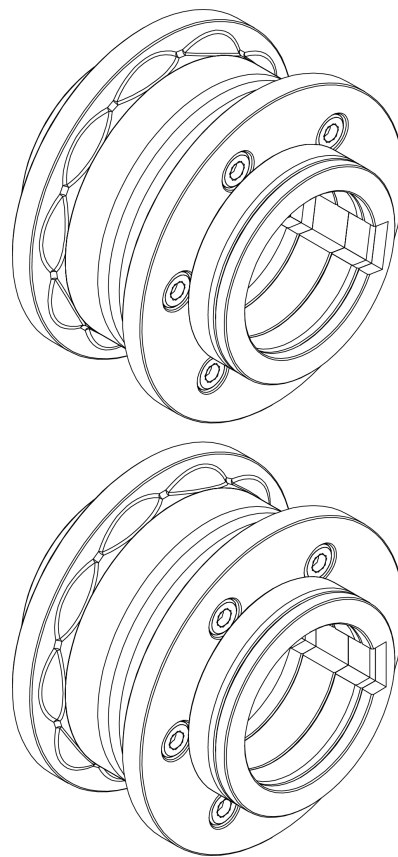


Technical features of accessories.
Set of embossing rollers for 25mm o 1", 30mm o 1" 1/4, 35 y 40mm

Ref. 140-11-01-00500

NOA60



TECHNICAL SPECIFICATIONS

PRADA NARGESA, S.L
Ctra. de Garrigàs a Sant Miquel s/n
17476 Palau de Santa Eulàlia (GIRONA) SPAIN Tel.
972 568085 - nargesa@nargesa.com
www.nargesa.com

INDICE

1. Description of the equipment

2. Elements identification

2.1. Upper roller

2.2. Lower Roller

3. Rollers assembling

3.1. Rollers assembling for 25mm or 1" pipe

3.2. Rollers assembling for 30mm or 1" 1/4 pipe

3.3. Rollers assembling for 35mm pipe

3.4. Rollers assembling for 40mm pipe

4. Our range of rollers for pipe embossing

1. Description of the equipment

- ▶ Set of rollers for engraving tubes of 25mm or 1", 30mm or 1 1/4", 35mm, and 40mm.



Reference: 140-11-01-00500

Set of segmented rollers for engraving different sizes of square or rectangular tubes in a single set.

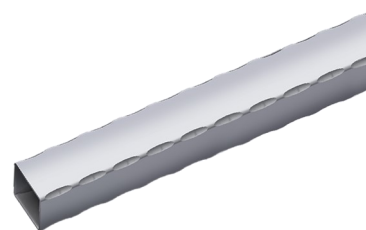
Adaptable to the following tubes:

Square tube: 25mm or 1", 30mm or 1 1/4", 35mm, and 40mm.

Rectangular tube: 25x20mm or 1"x3/4", 30x20mm or 1 1/4"x3/4", 30x25mm, 35x20mm, 35x25mm, 40x20mm, 40x25mm, 40x30mm, 40x35mm.

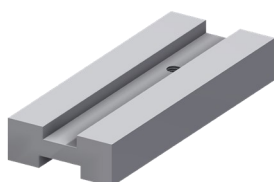
For use, the guide 140-11-01-00501 or the guide 140-11-01-00502 is necessary.

For different measurements, please consult the manufacturer.



Machine-specific set	Minimum recommended material thickness by the manufacturer.	Weight
1	3 mm	12 Kg

- ▶ Entry guide for 25mm or 1" and 30mm or 1 1/4" diameter tubes.

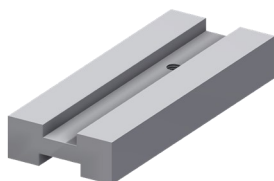


Reference: 140-11-01-00501

Entry guide for 25mm or 1" and 30mm or 1 1/4" diameter tubes.

Weight: 3 Kg.

- ▶ Entry guide for 35mm and 40mm diameter tubes.



Reference: 140-11-01-00502

Entry guide for 35mm and 40mm diameter tubes.


Weight: 2.8 Kg.

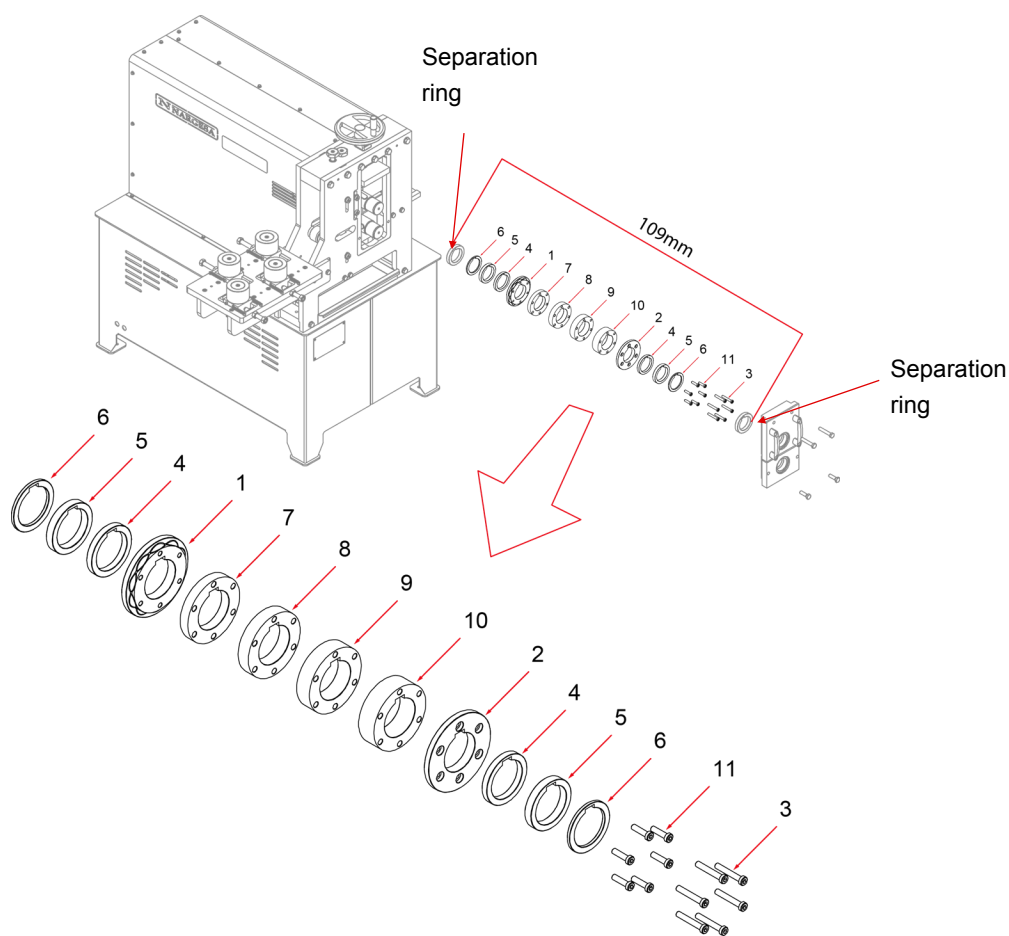
2. Elements identification

Sectioned rollers for pipe embossing have been designed to work on different pipe sizes with one only set of rollers.

2.1 Upper roller

IMPORTANT: In order to achieve a correct use of the machine, it is remarkably essential to place all elements so the total length of the set always remains 109mm.

 **HAZARD:** Never surpass 109mm as maximum length



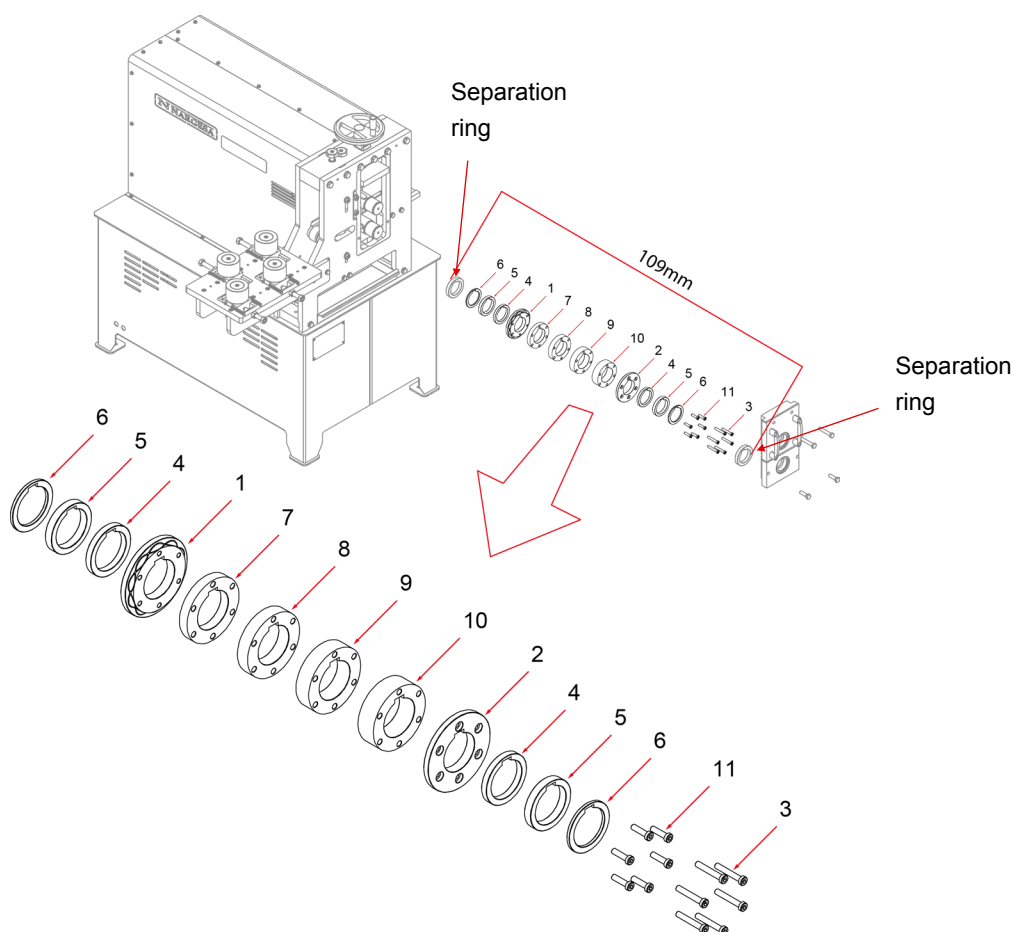
1	125-11-01-00005	LATERAL UPPER INNER ROLLER PIPE 25-40	1
2	125-11-01-00006	LATERAL UPPER OUTER ROLLER PIPE 25-40	1
3	020-D6912-M8X50	ALLEN SMALL HEADED SCREW DIN 6912 M8X50	6
4	125-11-01-00011	10 mm SECTIONED PIPE SPACER 25-40	2
5	125-11-01-00012	12.5 mm SECTIONED PIPE SPACER 25-40	2
6	125-11-01-00013	5 mm SECTIONED PIPE SPACER 25-40	2
7	125-11-01-00008	15 mm SECTIONED SPACER ROLLER 25	1
8	125-11-01-00009	20 mm SECTIONED SPACER ROLLER 30	1
9	125-11-01-00010	25 mm SECTIONED SPACER ROLLER 35	1
10	125-11-01-00007	28.5 mm SECTIONED SPACER ROLLER 40	1
11	020-D6912-M8X30	ALLEN SMALL HEADED SCREW DIN 6912 M8X30	6

2.2. Lower roller

IMPORTANT: In order to achieve a correct use of the machine, it is remarkably essential to place all elements so the total length of the set always remains 109mm.



HAZARD: Never surpass 109mm as maximum length

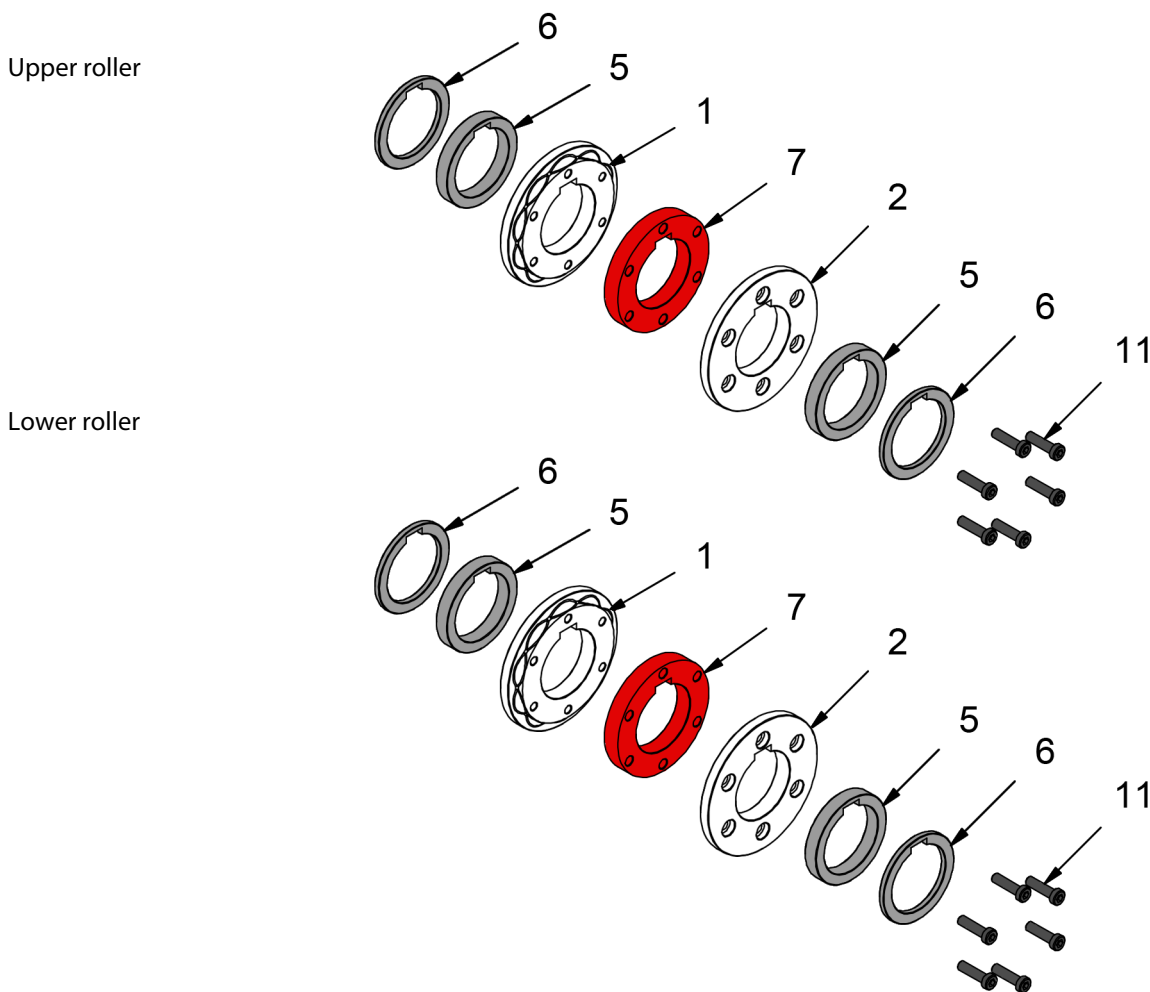


1	125-11-01-00005	LATERAL LOWER INNER ROLLER PIPE 25-40	1
2	125-11-01-00006	LATERAL LOWER OUTER ROLLER PIPE 25-40	1
3	020-D6912-M8X50	ALLEN SMALL HEADED SCREW DIN 6912 M8X50	6
4	125-11-01-00011	10 mm SECTIONED PIPE SPACER 25-40	2
5	125-11-01-00012	12.5 mm SECTIONED PIPE SPACER 25-40	2
6	125-11-01-00013	5 mm SECTIONED PIPE SPACER 25-40	2
7	125-11-01-00008	15 mm SECTIONED SPACER ROLLER 25	1
8	125-11-01-00009	20 mm SECTIONED SPACER ROLLER 30	1
9	125-11-01-00010	25 mm SECTIONED SPACER ROLLER 35	1
10	125-11-01-00007	28.5 mm SECTIONED SPACER ROLLER 40	1
11	020-D6912-M8X30	ALLEN SMALL HEADED SCREW DIN 6912 M8X30	6

3. Rollers assembling

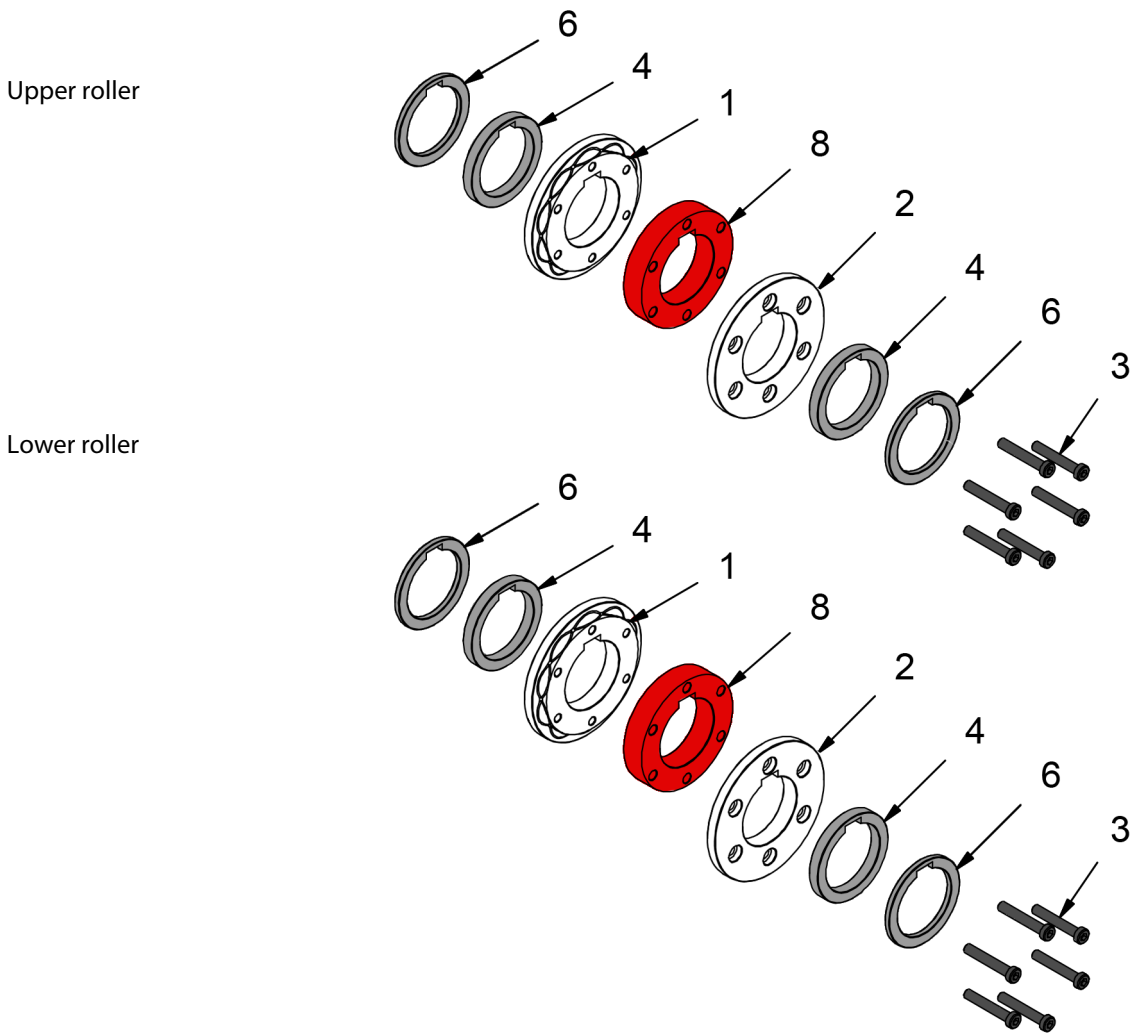
We'll use the different rollers sections depending on the size of the pipe to be embossed. Then we'll detail every element used for each pipe size, always including sections 1 and 2 to these sets, which are the ones to perform the embossing operation as such.

3.1. Rollers assembling for 25mm or 1" pipe



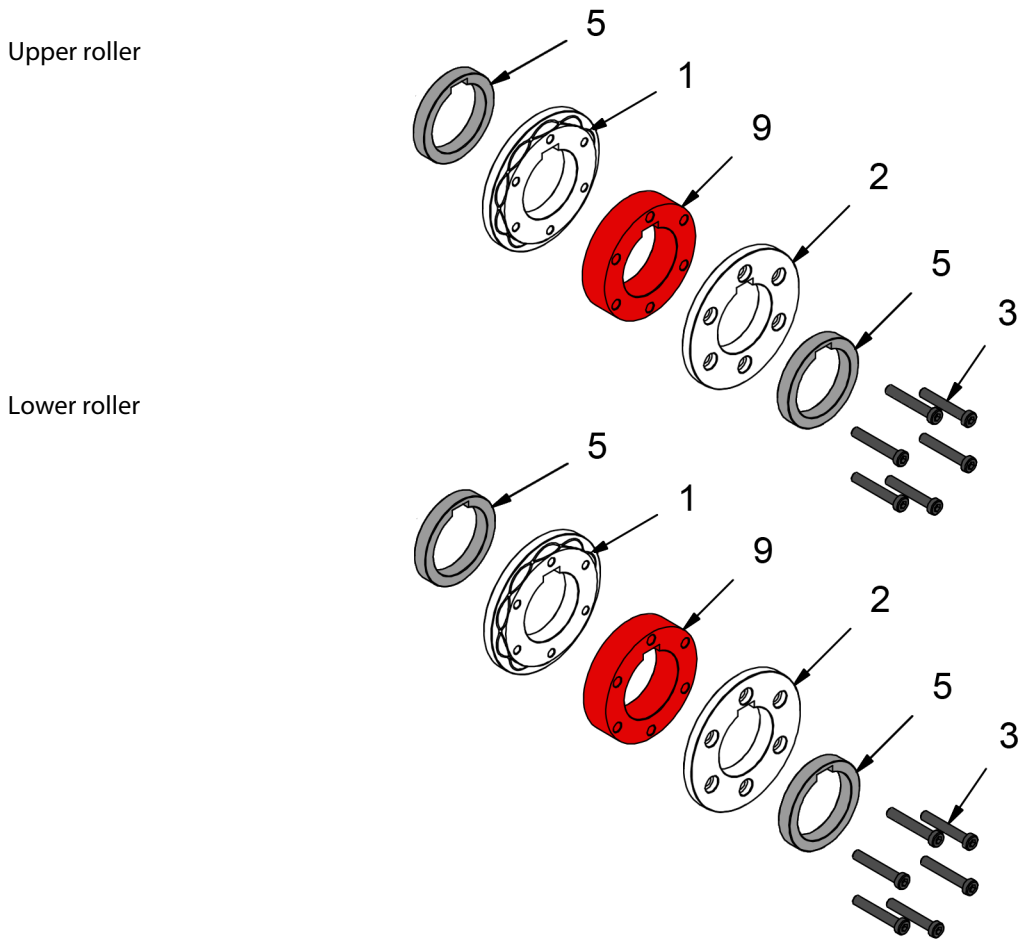
	INSIDE	7	125-11-01-00008	15 mm SECTIONED SPACER ROLLER 25
	EXTERIOR	5	125-11-01-00012	12.5 mm SECTIONED PIPE SPACER 25-40
	EXTERIOR	6	125-11-01-00013	5 mm SECTIONED PIPE SPACER 25-40
	SCREWS	11	020-D6912-M8X30	ALLEN SMALL HEADED SCREW DIN 6912 M8X30
		1	125-11-01-00005	LATERAL INNER ROLLER PIPE 25-40
		2	125-11-01-00006	LATERAL OUTER ROLLER PIPE 25-40

3.2. Rollers assembling for 30mm or 1" 1/4 pipe



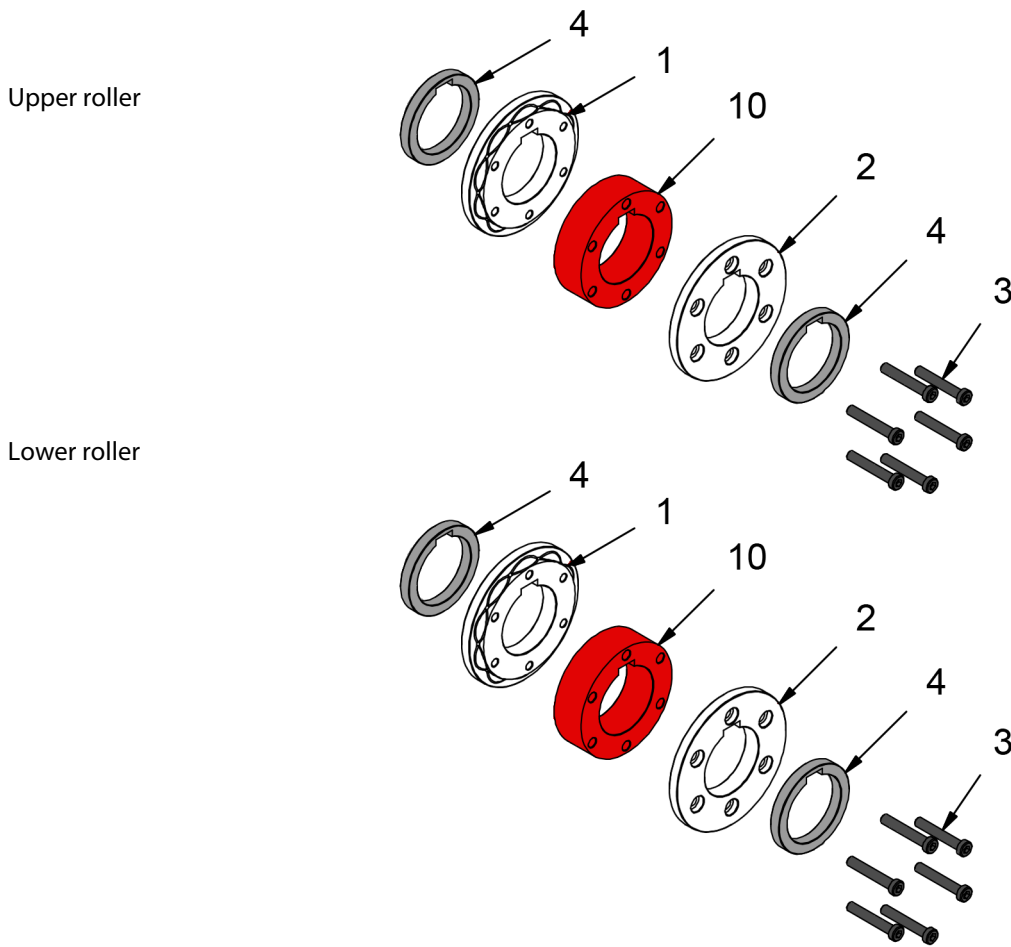
	INSIDE	8	125-11-01-00009	20 mm SECTIONED SPACER ROLLER 30
	EXTERIOR	4	125-11-01-00011	10 mm SECTIONED PIPE SPACER 25-40
	EXTERIOR	6	125-11-01-00013	5 mm SECTIONED PIPE SPACER 25-40
	SCREWS	3	020-D6912-M8X50	ALLEN SMALL HEADED SCREW DIN 6912 M8X50
		1	125-11-01-00005	LATERAL INNER ROLLER PIPE 25-40
		2	125-11-01-00006	LATERAL OUTER ROLLER PIPE 25-40

3.3. Rollers assembling for 35mm pipe



	INSIDE	9	125-11-01-00010	25 mm SECTIONED SPACER ROLLER 35
	EXTERIOR	5	125-11-01-00012	12.5 mm SECTIONED PIPE SPACER 25-40
	SCREWS	3	020-D6912-M8X50	ALLEN SMALL HEADED SCREW DIN 6912 M8X50
		1	125-11-01-00005	LATERAL INNER ROLLER PIPE 25-40
		2	125-11-01-00006	LATERAL OUTER ROLLER PIPE 25-40

3.4. Rollers assembling for 40mm pipe



	INSIDE	10	125-11-01-00007	28.5 mm SECTIONED SPACER ROLLER 40
	EXTERIOR	4	125-11-01-00011	10 mm SECTIONED PIPE SPACER 25-40
	SCREWS	3	020-D6912-M8X50	ALLEN SMALL HEADED SCREW DIN 6912 M8X50
		1	125-11-01-00005	LATERAL INNER ROLLER PIPE 25-40
		2	125-11-01-00006	LATERAL OUTER ROLLER PIPE 25-40

4. Our range of tube engraving rollers

► **Set of tube engraving rollers for 50mm and 60mm diameter tubes.**



Reference: 140-11-01-00503

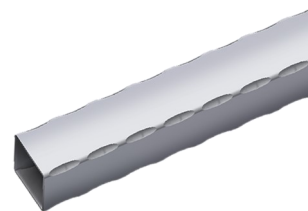
Set of segmented rollers for engraving different sizes of square or rectangular tubes in a single set. Adaptable to the following tubes:

Square tube: 50mm or 60mm.

Rectangular tube: 50x20mm, 50x25mm, 50x30mm, 50x35mm, 50x40mm, 50x45mm, 60x20mm, 60x25mm, 60x30mm, 60x35mm, 60x40mm, 60x45mm, 60x50mm, or 60x55mm.

For use, the guide 140-11-01-00505 or the guide 140-11-01-00506 is necessary.

For different measurements, please consult the manufacturer.



Machine-specific set	Minimum recommended material thickness by the manufacturer.	Weight
1	3 mm	6 Kg

► **Entry guide for 50mm diameter tubes.**



Reference: 140-11-01-00505

Entry guide for 50mm diameter tubes.

Weight: 2.4 Kg.

► **Entry guide for 60mm diameter tubes.**



Reference: 140-11-01-00506

Entry guide for 60mm diameter tubes.

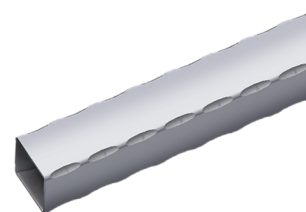
Weight: 2.2 Kg.

► **Set of tube engraving rollers for 1 1/2", 2", and 2 1/2" diameter tubes.**



Reference: 140-11-01-00507

Set of segmented rollers for engraving different sizes of square or rectangular tubes in a single set. Adaptable to the following tubes:



Square tube: 1 1/2", 2", and 2 1/2" inches.

Rectangular tube: 1 1/2" x 3/4", 1 1/2" x 1", 2" x 1", 2" x 1 1/4", 2" x 1 1/2", 2 1/2" x 1 1/2" inches.

For use, the guide 140-11-01-00508, 140-11-01-00509, or the guide 140-11-01-00510 is necessary.

For different measurements, please consult the manufacturer.

Machine-specific set	Minimum recommended material thickness by the manufacturer.	Weight
1	3 mm	6 Kg

► **Entry guide for 1 1/2" diameter tubes.**



Referencia: 140-11-01-00508

Guía de entrada para tubo de 1" 1/2 pulgadas

Peso: 2,6 Kg

► **Entry guide for 2" diameter tubes.**



Reference: 140-11-01-00509

Entry guide for 2" diameter tubes.

Weight: 2.4 Kg.

► **Entry guide for 2 1/2" diameter tubes.**



Reference: 140-11-01-00510

Entry guide for 2 1/2" diameter tubes.

Weight: 2.2 Kg.