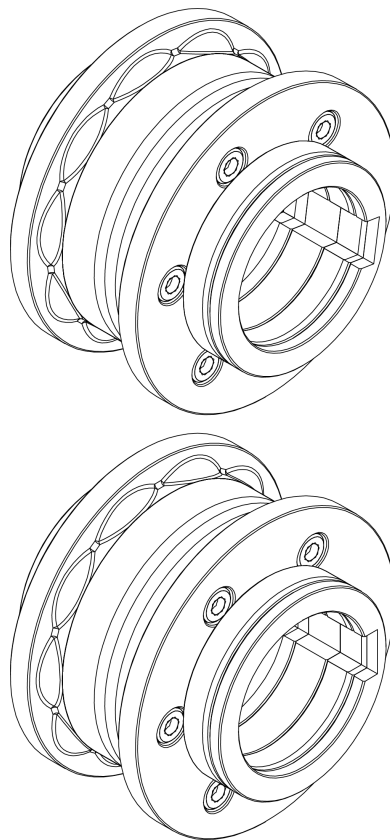


Technical features of Accessories Set of embossing rollers for 1" 1/2, 2" y 2" 1/2 pulgadas

Ref. 140-11-01-00507

NOA60



TECHNICAL SPECIFICATIONS

PRADA NARGESA, S.L
Ctra. de Garrigàs a Sant Miquel s/n
17476 Palau de Santa Eulàlia (GIRONA) SPAIN Tel.
972 568085 - nargesa@nargesa.com
www.nargesa.com

INDICE

- 1. Description of the tooling**
- 2. Identification of the elements**
 - 2.1. Upper roller
 - 2.2. Lower Roller
- 3. Rollers assembling**
 - 3.1. Rollers assembling for 1" 1/2 inches pipe
 - 3.2. Rollers assembling for 2" inches pipe 3
 3. Rollers assembling for 2" 1/2 inche
- 4. Our range of tube engraving rollerss pipe**

1. Description of the tooling

► Set of tube engraving rollers in sizes 1 1/2", 2", and 2 1/2" inches



Reference: 140-11-01-00507

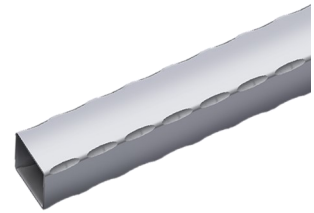
Set of segmented rollers for engraving different sizes of square or rectangular tubes in a single set. They can be adapted to the following tubes:

Square Tube: 1 1/2", 2", and 2 1/2" inches

Rectangular Tube: 1 1/2" x 3/4", 1 1/2" x 1", 2" x 1", 2" x 1 1/4", 2" x 1 1/2", 2 1/2" x 1 1/2" inches

For their use, guide 140-11-01-00508, 140-11-01-00509, or guide 140-11-01-00510 is required.

For different measurements, please consult *the manufacturer*.



Machine-specific set.	Minimum recommended material thickness by the manufacturer.	Weight
1	3 mm	6 Kg

► 1 1/2" inch tube entry guide



Reference: 140-11-01-00508

1 1/2" inch tube entry guide

Weight: 2.6 Kg

► 2" inch tube entry guide



Reference: 140-11-01-00509

2" inch tube entry guide

Weight: 2.4 Kg

► 2 1/2" inch tube entry guide.



Reference: 140-11-01-00510

2 1/2" inch tube entry guide


Weight: 2.2 Kg

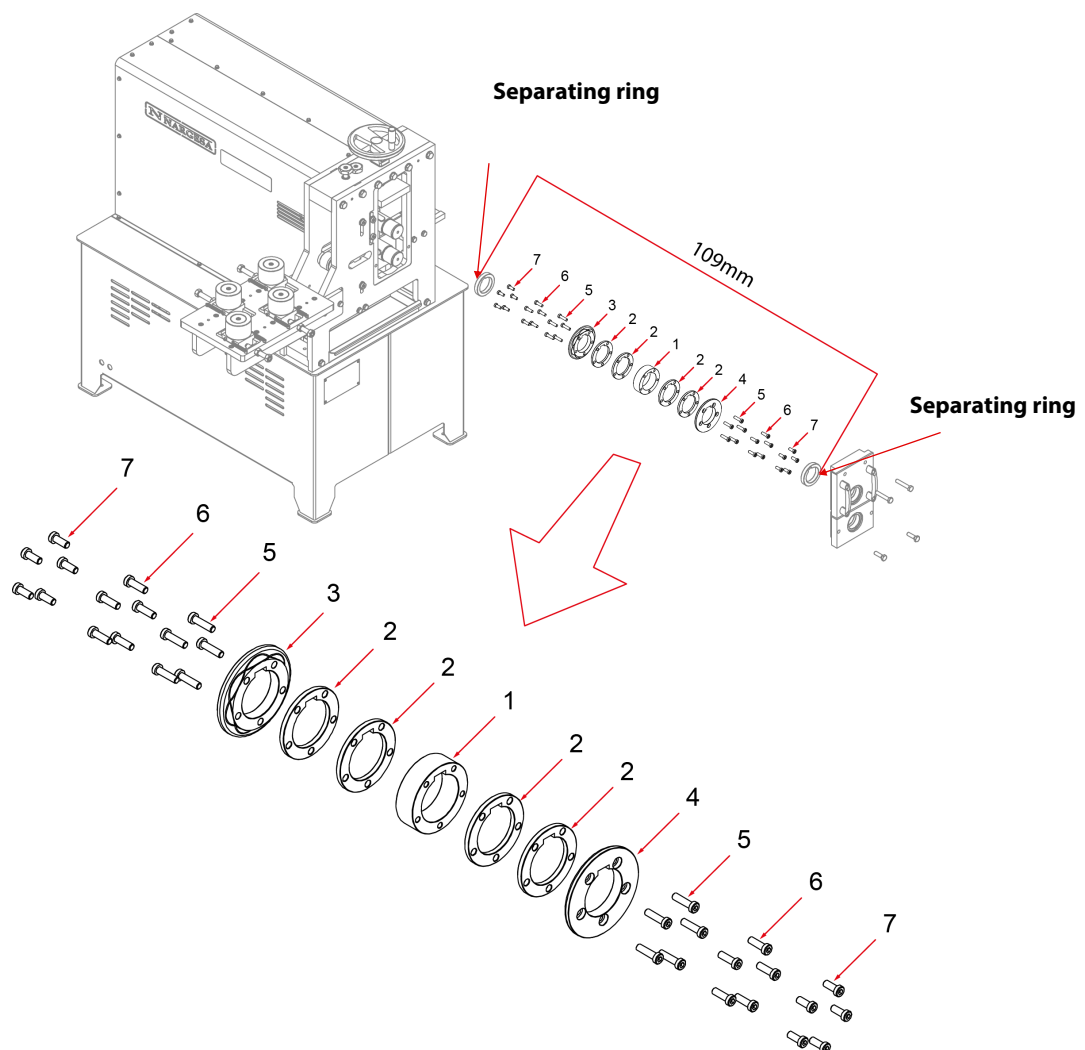
2. Identification of the elements:

The segmented rollers for tube engraving have been designed to work with different tube sizes using a single set of rollers.

2.1. Upper roller

IMPORTANT: For proper use of the machine, it is essential to place two separating rings, one at each end of the engraving roller, so that the total length of the set is always 109mm.


 **DANGER:** Never exceed this maximum length of 109mm.

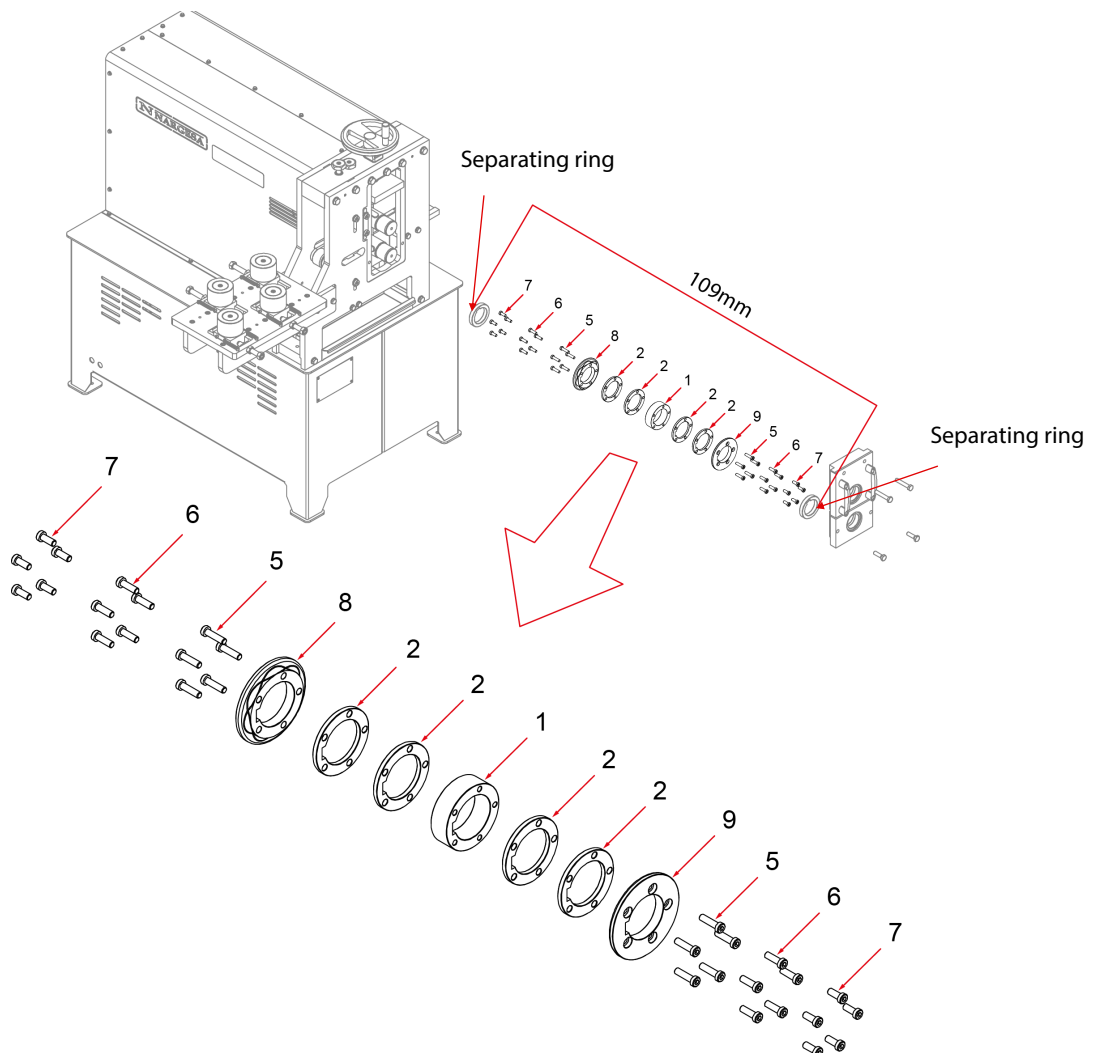


1	125-11-01-00016	27,1 mm SPACER	1
2	125-11-01-00017	6,25 mm SPACER	4
3	125-11-01-00014	UPPER INNER DIAMETER OF TUBE ROLLER FOR 1"1/2, 2" Y 2"1/2 TUBES	1
4	125-11-01-00015	UPPER OUTER DIAMETER OF TUBE ROLLER FOR 1"1/2, 2" Y 2"1/2 TUBES	1
5	020-D6912-M8X30	ALLEN SCREW WITH REDUCED HEAD DIN 6912 M8X30	10
6	020-D6912-M8X25	ALLEN SCREW WITH REDUCED HEAD DIN 6912 M8X25	10
7	020-D6912-M8X20	ALLEN SCREW WITH REDUCED HEAD DIN 6912 M8X20	10

2.2. Lower inferior

IMPORTANT: For proper use of the machine, it is essential to place two separating rings, one at each end of the engraving roller, to ensure that the total length of the assembly is always 109mm.

 **DANGER:** Never exceed this maximum length of 109mm.



1	125-11-01-00016	27,1 mm SPACER	1
2	125-11-01-00017	6,25 mm SPACER	4
5	020-D6912-M8X30	ALLEN SCREW WITH REDUCED HEAD DIN 6912 M8X30	10
6	020-D6912-M8X25	ALLEN SCREW WITH REDUCED HEAD DIN 6912 M8X25	10
7	020-D6912-M8X20	ALLEN SCREW WITH REDUCED HEAD DIN 6912 M8X20	10
8	125-11-01-00024	LOWER INNER DIAMETER OF TUBE ROLLER FOR 1"1/2, 2" Y 2"1/2 TUBES	1
9	125-11-01-00025	LOWER OUTER DIAMETER OF TUBE ROLLER FOR 1"1/2, 2" Y 2"1/2 TUBES.	1

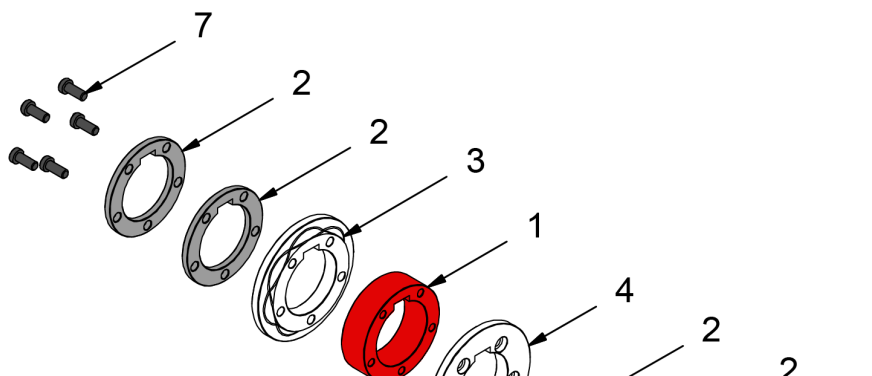
3. Assembly of the rollers:

We will use different sections of the rollers depending on the size of the tube we are going to engrave.

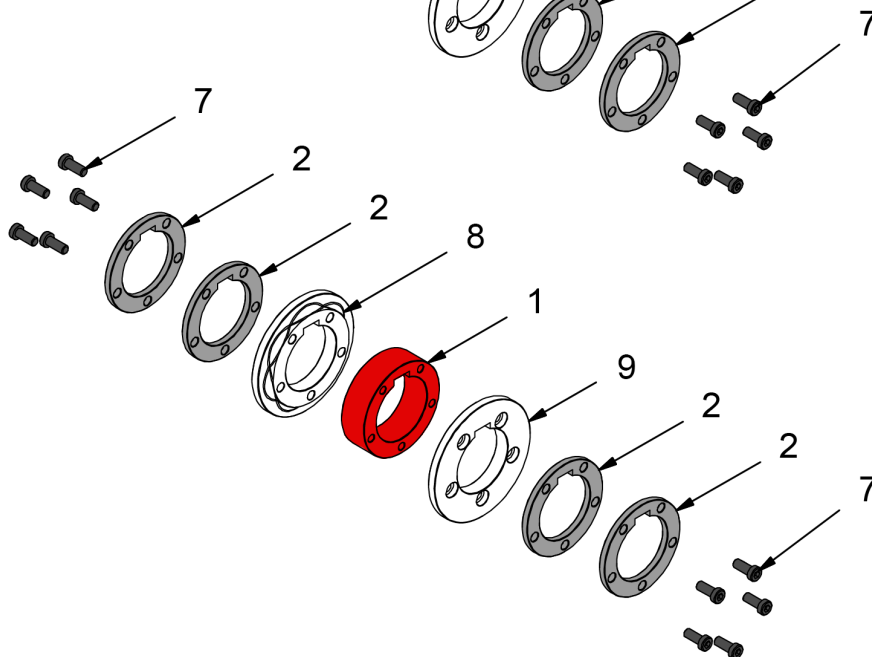
Next, we detail the elements used for each tube size, always adding sections 3 and 4 (in the upper roller) or 8 and 9 (in the lower roller), which are responsible for the engraving on the tube.

3.1. Assembly of the rollers for 1 1/2" inch tube.

Upper roller

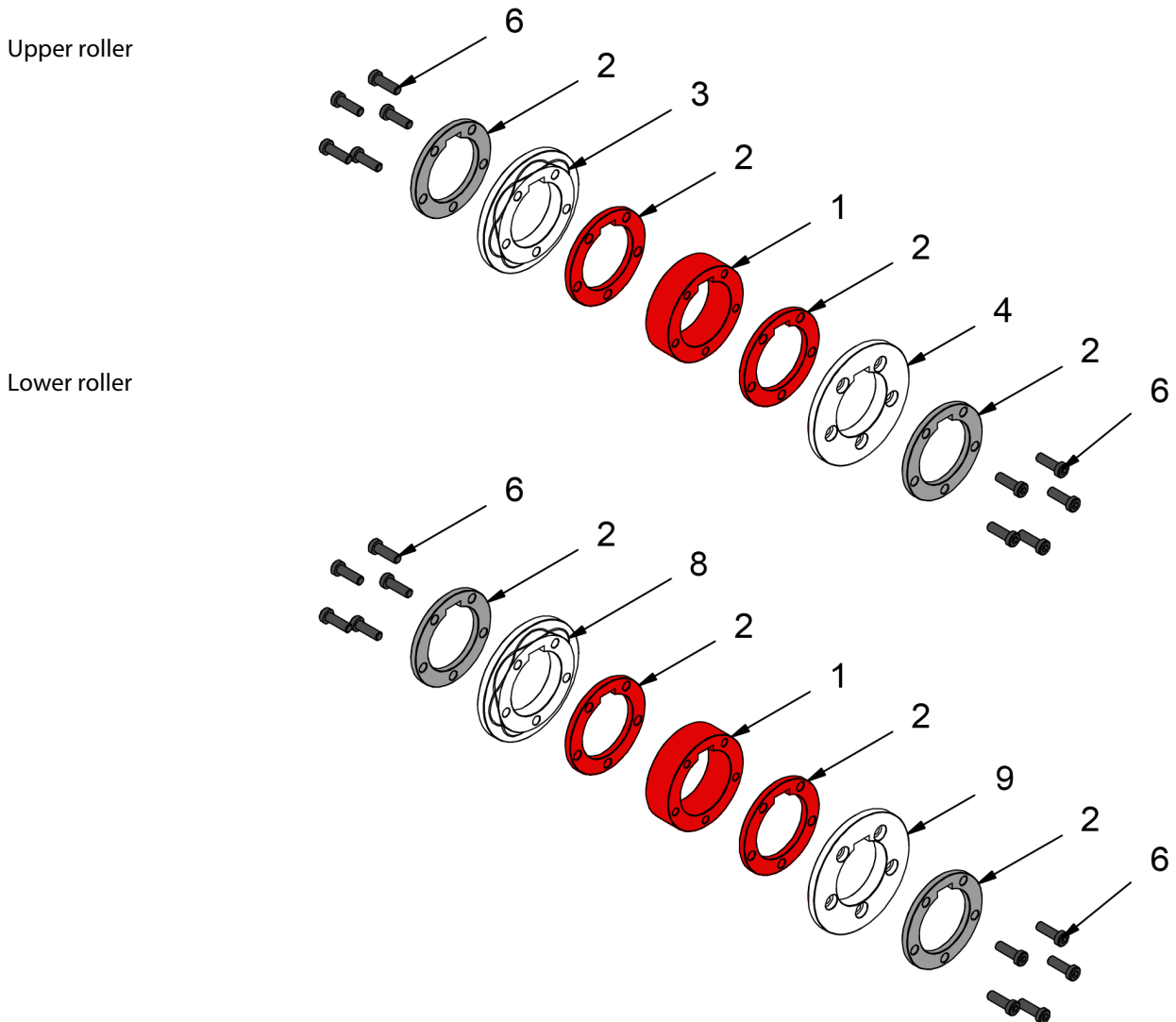


Lower roller



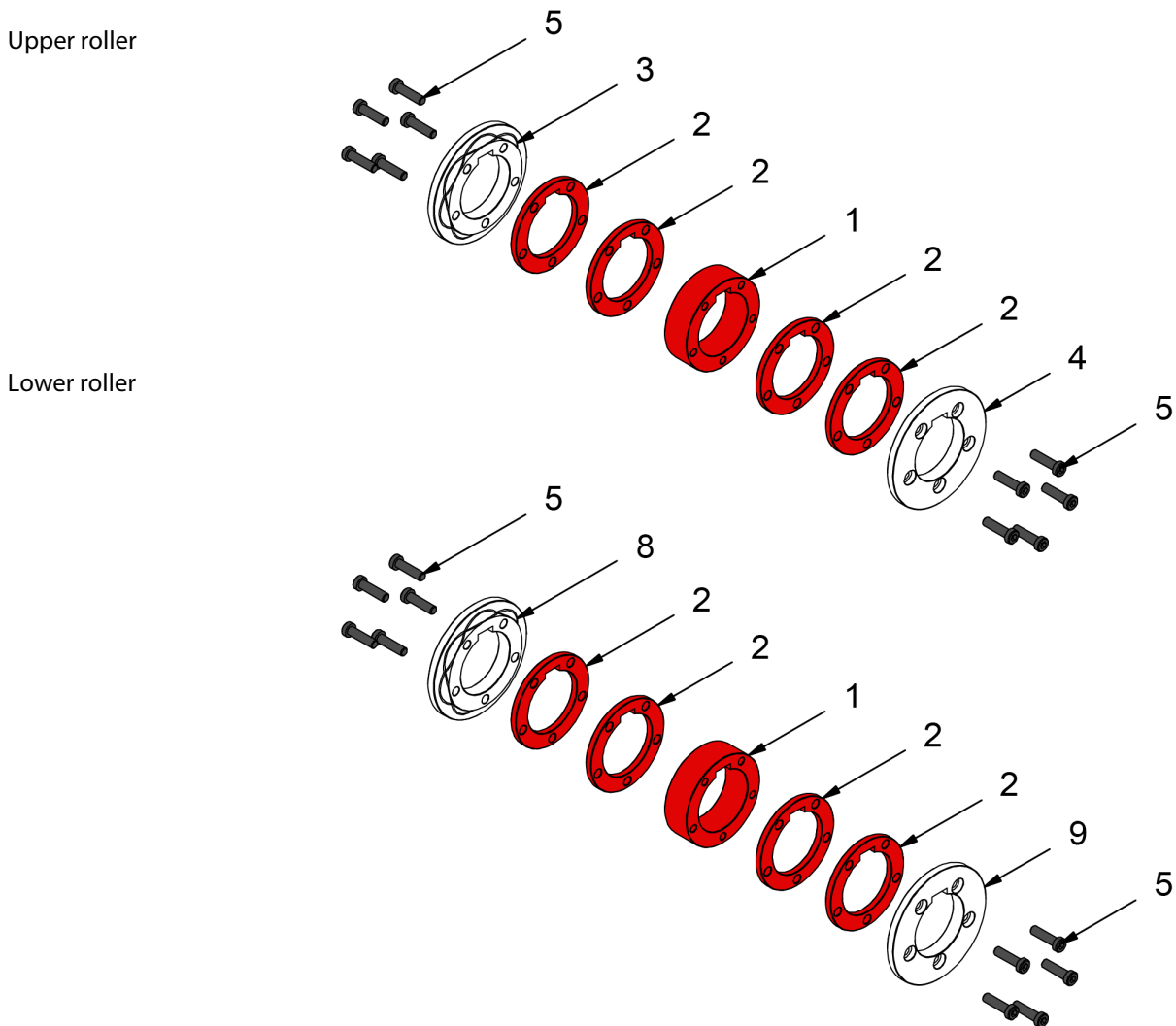
	INTERIOR	1	125-11-01-00016	27,1 mm SPACER
	EXTERIOR	2	125-11-01-00017	6,25 mm SPACER
	EXTERIOR	2	125-11-01-00017	6,25 mm SPACER
	SCREWS	7	020-D6912-M8X20	ALLEN SCREW WITH REDUCED HEAD DIN 6912 M8X20
		3	125-11-01-00014	UPPER INNER DIAMETER OF TUBE ROLLER FOR 1"1/2, 2" Y 2"1/2 TUBES
		4	125-11-01-00015	UPPER OUTER DIAMETER OF TUBE ROLLER FOR 1"1/2, 2" Y 2"1/2 TUBES
		8	125-11-01-00024	LOWER INNER DIAMETER OF TUBE ROLLER FOR 1"1/2, 2" Y 2"1/2 TUBES
		9	125-11-01-00025	LOWER OUTER DIAMETER OF TUBE ROLLER FOR 1"1/2, 2" Y 2"1/2 TUBES

3.2 Assembly of the rollers for 2" inch tube



	INTERIOR	1	125-11-01-00016	27,1 mm SPACER
	INTERIOR	2	125-11-01-00017	6,25 mm SPACER
	EXTERIOR	2	125-11-01-00017	6,25 mm SPACER
	SCREWS	6	020-D6912-M8X25	ALLEN SCREW WITH REDUCED HEAD DIN 6912 M8X25
		3	125-11-01-00014	UPPER INNER DIAMETER OF TUBE ROLLER FOR 1"1/2, 2" Y 2"1/2
		4	125-11-01-00015	UPPER OUTER DIAMETER OF TUBE ROLLER FOR 1"1/2, 2" Y 2"1/2 TUBES
		8	125-11-01-00024	LOWER INNER DIAMETER OF TUBE ROLLER FOR 1"1/2, 2" Y 2"1/2 TUBES
		9	125-11-01-00025	LOWER OUTER DIAMETER OF TUBE ROLLER FOR 1"1/2, 2" Y 2"1/2 TUBES

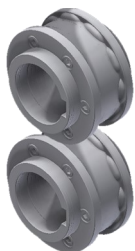
3.3. Assembly of the rollers for 2 1/2" inch tube.



INTERIOR	1	125-11-01-00016	27,1 mm SPACER
INTERIOR	2	125-11-01-00017	6,25 mm SPACER
INTERIOR	2	125-11-01-00017	6,25 mm SPACER
SCREWS	5	020-D6912-M8X30	ALLEN SCREW WITH REDUCED HEAD DIN 6912 M8X30
	3	125-11-01-00014	UPPER INNER DIAMETER OF TUBE ROLLER FOR 1"1/2, 2" Y 2"1/2 TUBE
	4	125-11-01-00015	UPPER OUTER DIAMETER OF TUBE ROLLER FOR 1"1/2, 2" Y 2"1/2 TUBE
	8	125-11-01-00024	LOWER INNER DIAMETER OF TUBE ROLLER FOR 1"1/2, 2" Y 2"1/2 TUBE
	9	125-11-01-00025	LOWER OUTER DIAMETER OF TUBE ROLLER FOR 1"1/2, 2" Y 2"1/2 TUBE

4. Our range of tube engraving rollers

- ▶ **Set of tube engraving rollers for 25mm or 1" tube, 30mm or 1 1/4" tube, 35mm tube, and 40mm tube.**



Reference: 140-11-01-00500

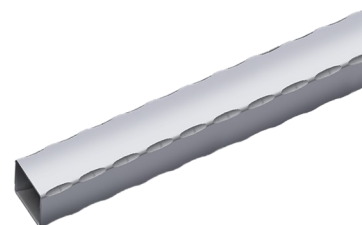
Set of segmented rollers for engraving different sizes of square or rectangular tubes in a single set. Adaptable to the following tubes:

Square Tube: 25mm or 1", 30mm or 1 1/4", 35mm, and 40mm

Rectangular Tube: 25x20mm or 1"x3/4", 30x20mm or 1 1/4"x3/4", 30x25mm, 35x20mm, 35x25mm, 40x20mm, 40x25mm, 40x30mm, 40x35mm

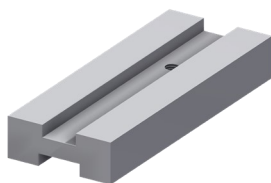
For their use, guide 140-11-01-00501 or guide 140-11-01-00502 is required.

For different measurements, please consult the manufacturer.



Machine-specific set.	Minimum recommended material thickness by the manufacturer.	Weight
1	3 mm	12 Kg

- ▶ **Entry Guide for 25mm or 1" and 30mm or 1 1/4" Tubes**

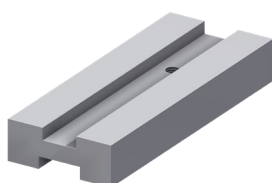


Reference: 140-11-01-00501

Entry Guide for 25mm or 1" and 30mm or 1 1/4" Tubes

Weight: 3 Kg

- ▶ **Entry Guide for 35mm and 40mm Tubes**



Reference: 140-11-01-00502

Entry Guide for 35mm and 40mm Tubes

Weight: 2.8 Kg

► **Set of rollers for engraving tubes of 50mm and 60mm**



Reference: 140-11-01-00503

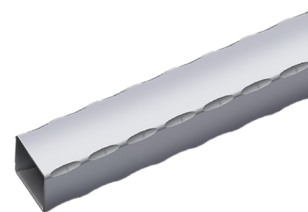
Set of segmented rollers for engraving different sizes of square or rectangular tubes in the same set. Adaptable to the following tubes:

Square tube: 50mm or 60mm

Rectangular tube: 50x20mm, 50x25mm, 50x30mm, 50x35mm, 50x40mm, 50x45mm, 60x20mm, 60x25mm, 60x30mm, 60x35mm, 60x40mm, 60x45mm, 60x50mm or 60x55mm

For use, guide 140-11-01-00505 or guide 140-11-01-00506 is required.

For different sizes, please consult the manufacturer.



Machine-specific set.	Minimum recommended material thickness by the manufacturer.	Weight
1	3 mm	6 Kg

► **Entry guide for 50mm tube**



Reference: 140-11-01-00505

Entry guide for 50mm tube

Weight: 2.4 Kg

► **Entry guide for 60mm tube**



Reference: 140-11-01-00506

Entry guide for 60mm tube

Weight: 2.2 Kg